

Case Study

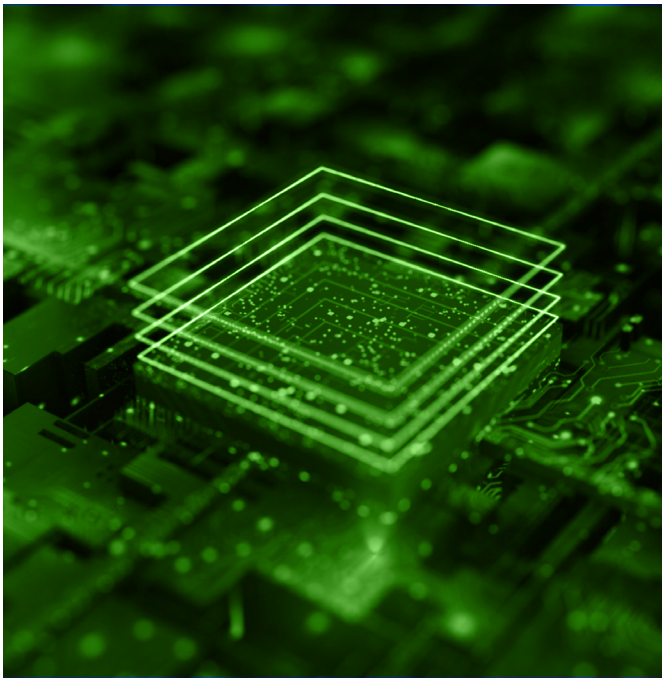
# Beating the Clock on Geological Data Delivery

Neubrex finds a seamless way to capture, deliver, and archive data with Lyve™ Mobile.

For a company like Neubrex, whose mission is to collect and deliver fibre optic sensing data to geoscience engineers working on design and development projects, time is of the essence. They rely on this data to study subsurface geological features, examine changes in subsurface wells, and assess risks. To accelerate the data collection and hand-off process, Neubrex turns to Lyve Mobile.

- Accelerated field data processing by 30-40%
- Improved data access times by 40%
- Reduced data delivery time two weeks
- Simplified data ingest/ improved security

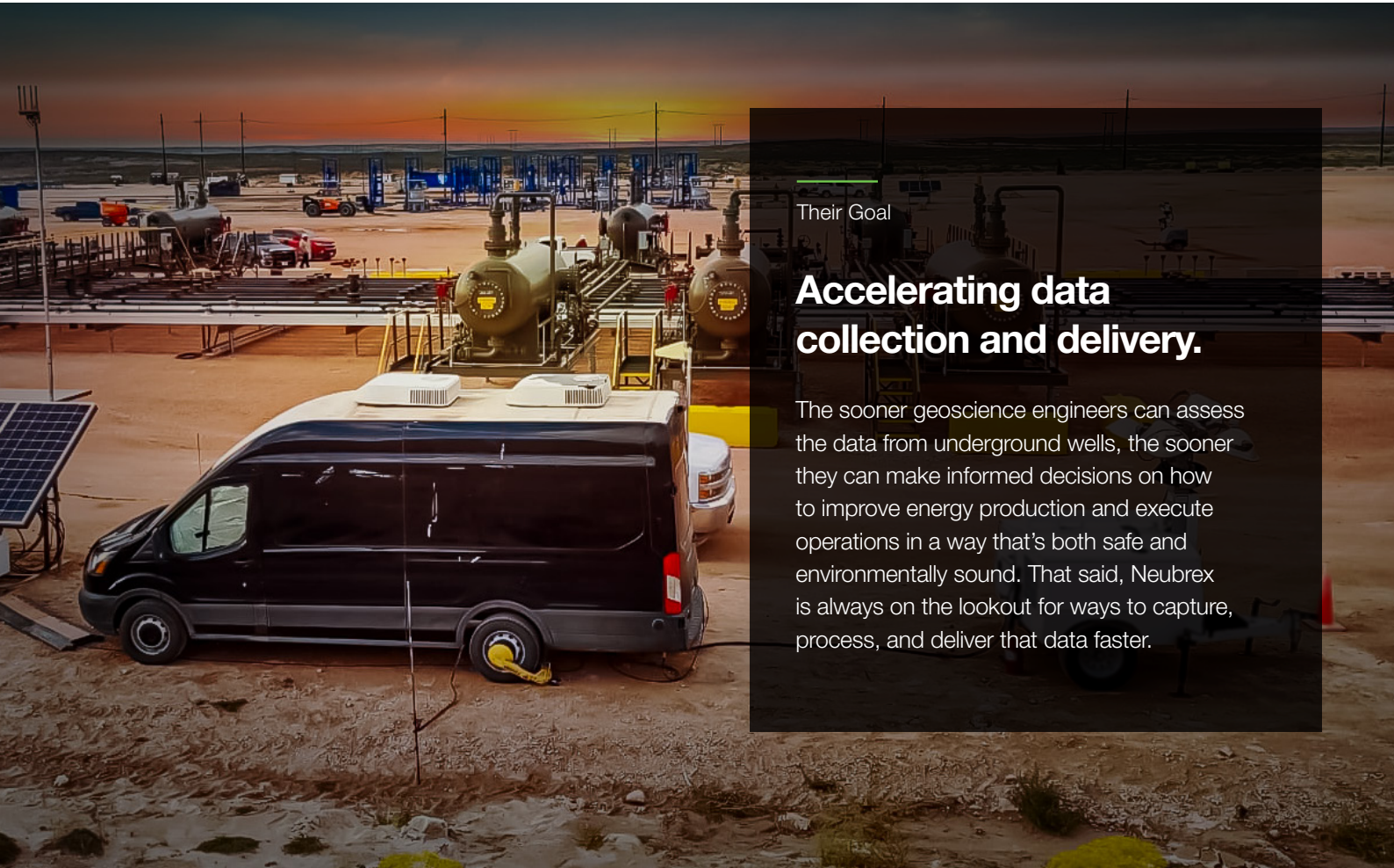




—  
Their Story

## Getting data into the hands of geoscience engineers.

Neubrex is an energy services company that uses distributed fibre optic sensing technology to make detailed measurements of 2D and 3D physical features and dynamic processes associated with underground well operations. As a critical part of the energy development and carbon management market, they collect and process this data in near real time at the field sites, allowing them to deliver insights and answers fast.



—  
Their Goal

## Accelerating data collection and delivery.

The sooner geoscience engineers can assess the data from underground wells, the sooner they can make informed decisions on how to improve energy production and execute operations in a way that's both safe and environmentally sound. That said, Neubrex is always on the lookout for ways to capture, process, and deliver that data faster.



Their Challenge

## Delays for days.

In the past, Neubrex used individual hard drives and small RAID systems to store on-site data. This made initial processing and filtering of top-line data difficult. Additionally, storing up to 500 TB of data on individual hard drives, organising those drives, and then keeping those drives secure through heat, humidity, dust, dirt, and rough terrain...well...that was perhaps even more difficult.

Their Solution

## Edge-to-cloud victory with Lyve Mobile.

Nowadays, Neubrex has a better solution for wrangling data: Lyve Mobile by Seagate. As a full suite of integrated, high-capacity, data transfer solutions for edge-to-cloud workflows, Lyve Mobile helps teams aggregate, store, process, and move massive volumes of data fast and easily.

For Neubrex, their field engineers can quickly write data from their proprietary data acquisition systems onto Lyve Mobile Array units. Those units then interface immediately with high-powered processing systems. In essence, this means the team has an on-location data centre and is no longer at the mercy of network bottlenecks and dependencies.



As a result, Neubrex is getting data to the cloud up to 10 times faster and reducing processing time by 30 - 40%.

Additionally, Lyve Mobile makes it easier (and safer) for them to physically move data by eliminating the risks and confusion that come with using individual hard drives — just one Lyve Mobile Array alone holds up to 96 TB. Factor in the unit's secure, ruggedized transport case, and teams can seamlessly move data by vehicle to wherever it needs to go next.





When it's time to move data sets to the cloud, Lyve Mobile services with cloud import helps them transfer data from any endpoint, edge, or core location to any major cloud they choose — quickly, simply and securely. Neubrex simply pays a flat fee per device while Seagate handles all the logistics and end-to-end support. Neubrex maintains sole ownership of and access to their data from beginning to end.

Neubrex has found that using [Lyve Mobile cloud import is far faster than moving data via networks](#). They can transfer a full project data set of 500 TB to the cloud in just three days — including shipping time and direct ingress at the data centre with Lyve Mobile's high-speed interface — compared to the 47 days it takes for a network transfer based on 1 Gbps bandwidth typically available in the field.

Lyve Mobile units are designed to interface easily with in-field data processing systems and high-throughput enterprise data centre systems. In turn, Neubrex can rapidly deliver the valuable information their customers have paid for.

“Measuring the current, dynamic status of subsurface conditions around a deep well during many engineering operations is a real-time, one-time operation. There is no second chance,” notes Dana Jurick, EVP and GM at Neubrex. “It's crucial the data comes back in good condition and can be assessed quickly so we can generate the information and insights our customers expect and need while it's still valuable. The faster we get the measurements from the field into the hands of an engineer, the faster that engineer or team can make assessments that lead to decisions. Lyve Mobile ensures that happens.”



*Nowadays, Neubrex has a better solution for wrangling data: Lyve Mobile by Seagate. As a full suite of integrated, high-capacity, data transfer solutions for edge-to-cloud workflows, Lyve Mobile helps them aggregate, store, process, and move massive volumes of data fast and easily. With Lyve Mobile, Neubrex is getting data to the cloud up to 10 times faster and reducing processing time by 30 - 40%.*



Their Success

## Faster service equals more business.

Neubrex helps customers know, as soon as possible, what's going on in a well and the surrounding subsurface. Lyve Mobile has elevated their ability to do just that with simpler data ingest, better security, and faster in-field processing. They can also deliver raw data more efficiently to the cloud for archival and future access. In the end, this means more clients and smoother projects.



**“Lyve Mobile simplifies our entire process — it’s improved our ability to rapidly capture data, to keep it safe, and to process it immediately so we can deliver the valuable insights our customers need.”**

DANA JURICK, EVP AND GM, NEUBREX



# Products Used



**Ready to  
Learn More?**

Our storage specialists are here to help you find the right solution for your data challenges.  
**[Talk to an expert.](#)**

[seagate.com](https://www.seagate.com)

© 2022 Seagate Technology LLC. All rights reserved. Seagate, Seagate Technology, and the Spiral logo are registered trademarks of Seagate Technology LLC in the United States and/or other countries. Lyve™ is either a trademark or registered trademark of Seagate Technology LLC or one of its affiliated companies in the United States and/or other countries. All other trademarks or registered trademarks are the property of their respective owners. When referring to drive capacity, one gigabyte, or GB, equals one billion bytes and one terabyte, or TB, equals one trillion bytes. Your computer's operating system may use a different standard of measurement and report a lower capacity. In addition, some of the listed capacity is used for formatting and other functions, and thus will not be available for data storage. The export or re-export of Seagate hardware or software is regulated by the U.S. Department of Commerce, Bureau of Industry and Security (for more information, visit [www.bis.doc.gov](https://www.bis.doc.gov)), and may be controlled for export, import and use in other countries. Seagate reserves the right to change, without notice, product offerings or specifications. CS636.1-2211GB

