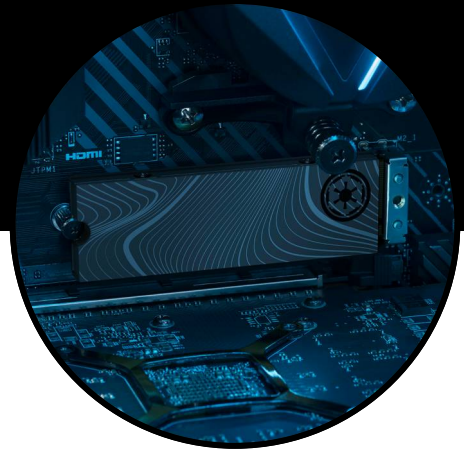




DATA SHEET

Beskar™ Ingot Drive Special Edition FireCuda PCIe Gen4 NVMe SSD



Wield the deadliest M.2 SSD in the galaxy — the officially-licensed Beskar™ Ingot Drive. Forged with a beskar ingot design for true collectors, this Special Edition FireCuda PCIe Gen4 NVMe SSD features heatsink tech to keep systems running at peak performance. And with read/write speeds up to 7,300/6,000 MB/s, this drive will honour all the games in your orbit.



Key Features:

This FireCuda NVMe SSD with heatsink is inspired by the Mandalorian's beskar ingot.

Forged with a beskar ingot design, this collectible's theme is inspired by *The Mandalorian™*, down to its Imperial stamp.

Leverage sequential read/write performance up to 7,300/6,000 MB/s.

Includes custom-built low-profile heatsink designed by EKWB and Seagate to help minimise thermal throttling and maintain peak performance for longer time periods of time.

Sleek heatsink design allows for premium installation flexibility.

Our fastest M.2 2280 SSD features speeds up to 12x faster than SATA SSD.

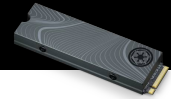
Bring long lasting endurance with 0.7 DWPD, 1.8M MTBF, and 1,275 TB TBW.

Ultrafast speeds and large capacity helps maximise speed while multitasking and creating content.

Enjoy peace of mind with our industry leading 5-year warranty and 3-year Rescue Data Recovery Services.

Add new drives to your computer and monitor their health and performance with free DiscWizard™ and SeaTools™ software.





Beskar™ Ingot Drive

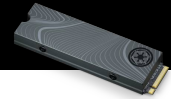
Special Edition FireCuda PCIe Gen4 NVMe SSD

Specifications	1TB	500GB
Standard Model	ZP1000GM30033	ZP500GM30033
Interface	PCIe Gen4 x4 NVMe 1.4	PCIe Gen4 x4 NVMe 1.4
NAND Flash Memory	3D TLC	3D TLC
Form Factor	M.2 2280 with heatsink	M.2 2280 with heatsink
Performance		
Sequential Read (Max, MB/s), 128 KB ²	7,300	7,000
Sequential Write (Max, MB/s), 128 KB ²	6,000	3,000
Random Read (Max, IOPS), 4 KB QD32 T8 ²	800,000	400,000
Random Write (Max, IOPS), 4 KB QD32 T8 ²	1,000,000	700,000
Endurance/Reliability		
Total Bytes Written (TB)	1275	640
Mean Time Between Failures (MTBF, hours)	1,800,000	1,800,000
Rescue Data Recovery Services (years) ³	3	3
Warranty, Limited (years)	5	5
Power Management		
Active Power, Average (W)	6.3	6
Idle Power PS3, Average (mW)	0.02	0.015
Low Power L1.2 mode (mW)	<5	<5
Environmental		
Temperature, Operating Internal (°C)	0°C – 70°C	0°C – 70°C
Temperature, Non-operating (°C)	-40°C – 85°C	-40°C – 85°C
Shock, Non-operating: 0.5 ms (Gs)	1,500	1,500
Special Features		
TRIM	Yes	Yes
S.M.A.R.T.	Yes	Yes
Halogen-free	Yes	Yes
RoHS compliance	Yes	Yes
Physical		
Length (mm/in, max)	3.155 in	3.156 in
Width (mm/in, max)	24.2 mm/0.953 in	24.2 mm/0.953 in
Height (mm/in, max)	9.84 mm/0.387 in	9.84 mm/0.387 in
Weight (lb/g)	47 g/0.104 lb	47 g/0.104 lb

¹ Fresh out of box (FOB) performance obtained on newly formatted drive. Performance may vary based on SSD's firmware version, system hardware, and configuration. Performance based on CrystalDiskMark v.7.0.0

² ×64 on Windows 10 host with PCIe Gen4 motherboard.

³ Rescue Data Recovery Services not available in all countries.



Beskar™ Ingot Drive

Special Edition FireCuda PCIe Gen4 NVMe SSD

Specifications			
Retail Packaging	Box Dimensions	Master Carton Dimensions	Pallet Dimensions
Length (in/mm)	6.181 in/157 mm	10.709 in/272 mm	47.992 in/1,219 mm
Width (in/mm)	6.102 in/155 mm	7.48 in/190 mm	40 in/1,016 mm
Depth (in/mm)	0.906 in/23 mm	9.134 in/232 mm	41.22 in/1,047 mm
Weight (lb/kg)	0.419 lb/0.19 kg	5.379 lb/2.44 kg	460.766 lb/209 kg
Quantities			
Boxes per Master Carton	10		
Master Cartons per Pallet	80		
Pallet Layers	4		

System Requirements	What's Included
<ul style="list-style-type: none"> M.2 (M key) slot, PCIe® G4 x4 interface (backwards compatible with PCIe G3 interface) Windows® 10, Windows® 11 Linux 	<ul style="list-style-type: none"> Beskar™ Ingot Drive Special Edition FireCuda® PCIe Gen4 NVMe™ SSD

Region	Model Number	Capacity	Limited Warranty (years)	UPC Code	EAN Code	Multi-Pack UPC
WW	ZP500GM3A033	500GB	5	763649170670	8719706427814	10763649170677
WW	ZP1000GM3A033	1TB	5	763649170687	8719706427821	10763649170684

[seagate.com](https://www.seagate.com)



© 2021 Seagate Technology LLC. All rights reserved. Seagate, Seagate Technology, and the Spiral logo are registered trademarks of Seagate Technology LLC in the United States and/or other countries. FireCuda and the FireCuda logo are either trademarks or registered trademarks of Seagate Technology LLC or one of its affiliated companies in the United States and/or other countries. The PCIe word mark and/or PCIeExpress design mark are registered trademarks and/or service marks of PCI-SIG. All other trademarks or registered trademarks are the property of their respective owners. When referring to drive capacity, one gigabyte, or GB, equals one billion bytes and one terabyte, or TB, equals one trillion bytes. Your computer's operating system may use a different standard of measurement and report a lower capacity. In addition, some of the listed capacity is used for formatting and other functions, and thus will not be available for data storage. Actual data rates may vary depending on operating environment and other factors, such as chosen interface and drive capacity. Seagate reserves the right to change, without notice, product offerings or specifications. DS2085.1-2110GB October 2021