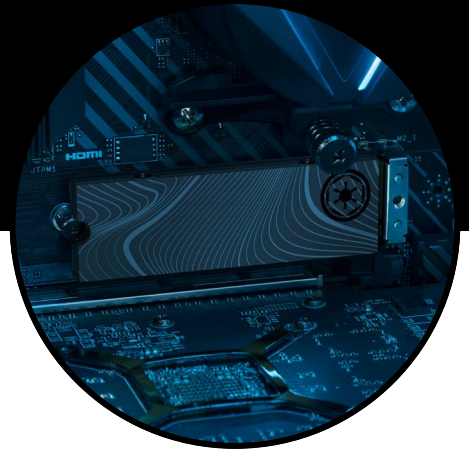




DATA SHEET

Beskar™ Ingot Drive Special Edition FireCuda PCIe Gen4 NVMe SSD



Wield the deadliest M.2 SSD in the galaxy — the officially-licensed Beskar™ Ingot Drive. Forged with a beskar ingot design for true collectors, this Special Edition FireCuda PCIe Gen4 NVMe SSD features heatsink tech to keep systems running at peak performance. And with read/write speeds up to 7,300/6,000 MB/s, this drive will honour all the games in your orbit.



Key Features:

This FireCuda NVMe SSD with heatsink is inspired by the Mandalorian's beskar ingot.

Forged with a beskar ingot design, this collectible's theme is inspired by *The Mandalorian™*, down to its Imperial stamp.

Leverage sequential read/write performance up to 7,300/6,000 MB/s.

Includes custom-built low-profile heatsink designed by EKWB and Seagate to help minimise thermal throttling and maintain peak performance for longer time periods of time.

Sleek heatsink design allows for premium installation flexibility.

Our fastest M.2 2280 SSD features speeds up to 12x faster than SATA SSD.

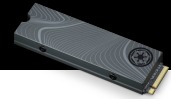
Bring long lasting endurance with 0.7 DWPD, 1.8M MTBF, and 1,275 TB TBW.

Ultrafast speeds and large capacity helps maximise speed while multitasking and creating content.

Enjoy peace of mind with our industry leading 5-year warranty and 3-year Rescue Data Recovery Services.

Add new drives to your computer and monitor their health and performance with free DiscWizard™ and SeaTools™ software.





Beskar™ Ingot Drive

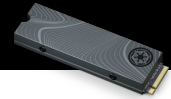
Special Edition FireCuda PCIe Gen4 NVMe SSD

| Specifications | 1 TB | 500GB |
|---|------------------------|------------------------|
| Standard Model | ZP1000GM30033 | ZP500GM30033 |
| Interface | PCIe Gen4 x4 NVMe 1.4 | PCIe Gen4 x4 NVMe 1.4 |
| NAND Flash Memory | 3D TLC | 3D TLC |
| Form Factor | M.2 2280 with heatsink | M.2 2280 with heatsink |
| Performance | | |
| Sequential Read (Max, MB/s), 128 KB ² | 7,300 | 7,000 |
| Sequential Write (Max, MB/s), 128 KB ² | 6,000 | 3,000 |
| Random Read (Max, IOPS), 4 KB QD32 T8 ² | 800,000 | 400,000 |
| Random Write (Max, IOPS), 4 KB QD32 T8 ² | 1,000,000 | 700,000 |
| Endurance/Reliability | | |
| Total Bytes Written (TB) | 1275 | 640 |
| Mean Time Between Failures (MTBF, hours) | 1,800,000 | 1,800,000 |
| Rescue Data Recovery Services (years) ³ | 3 | 3 |
| Warranty, Limited (years) | 5 | 5 |
| Power Management | | |
| Active Power, Average (W) | 6.3 | 6 |
| Idle Power PS3, Average (mW) | 0.02 | 0.015 |
| Low Power L1.2 mode (mW) | <5 | <5 |
| Environmental | | |
| Temperature, Operating Internal (°C) | 0°C – 70°C | 0°C – 70°C |
| Temperature, Non-operating (°C) | -40°C – 85°C | -40°C – 85°C |
| Shock, Non-operating: 0.5 ms (Gs) | 1,500 | 1,500 |
| Special Features | | |
| TRIM | Yes | Yes |
| S.M.A.R.T. | Yes | Yes |
| Halogen-free | Yes | Yes |
| RoHS compliance | Yes | Yes |
| Physical | | |
| Length (mm/in, max) | 3.155 in | 3.156 in |
| Width (mm/in, max) | 24.2 mm/0.953 in | 24.2 mm/0.953 in |
| Height (mm/in, max) | 9.84 mm/0.387 in | 9.84 mm/0.387 in |
| Weight (lb/g) | 47 g/0.104 lb | 47 g/0.104 lb |

¹ Fresh out of box (FOB) performance obtained on newly formatted drive. Performance may vary based on SSD's firmware version, system hardware, and configuration. Performance based on CrystalDiskMark v.7.0.0

² ×64 on Windows 10 host with PCIe Gen4 motherboard.

³ Rescue Data Recovery Services not available in all countries.



Beskar™ Ingot Drive

Special Edition FireCuda PCIe Gen4 NVMe SSD

| Specifications | | | |
|---------------------------|------------------|--------------------------|--------------------|
| Retail Packaging | Box Dimensions | Master Carton Dimensions | Pallet Dimensions |
| Length (in/mm) | 6.181 in/157 mm | 10.709 in/272 mm | 47.992 in/1,219 mm |
| Width (in/mm) | 6.102 in/155 mm | 7.48 in/190 mm | 40 in/1,016 mm |
| Depth (in/mm) | 0.906 in/23 mm | 9.134 in/232 mm | 41.22 in/1,047 mm |
| Weight (lb/kg) | 0.419 lb/0.19 kg | 5.379 lb/2.44 kg | 460.766 lb/209 kg |
| Quantities | | | |
| Boxes per Master Carton | 10 | | |
| Master Cartons per Pallet | 80 | | |
| Pallet Layers | 4 | | |

| System Requirements | What's Included |
|--|---|
| <ul style="list-style-type: none"> M.2 (M key) slot, PCIe® G4 x4 interface (backwards compatible with PCIe G3 interface) Windows® 10, Windows® 11 Linux | <ul style="list-style-type: none"> Beskar™ Ingot Drive Special Edition FireCuda® PCIe Gen4 NVMe™ SSD |

| Region | Model Number | Capacity | Limited Warranty (years) | UPC Code | EAN Code | Multi-Pack UPC |
|--------|---------------|----------|--------------------------|--------------|---------------|----------------|
| WW | ZP500GM3A033 | 500GB | 5 | 763649170670 | 8719706427814 | 10763649170677 |
| WW | ZP1000GM3A033 | 1 TB | 5 | 763649170687 | 8719706427821 | 10763649170684 |

[seagate.com](https://www.seagate.com)



© 2021 Seagate Technology LLC. All rights reserved. Seagate, Seagate Technology, and the Spiral logo are registered trademarks of Seagate Technology LLC in the United States and/or other countries. FireCuda and the FireCuda logo are either trademarks or registered trademarks of Seagate Technology LLC or one of its affiliated companies in the United States and/or other countries. The PCIe word mark and/or PCIeExpress design mark are registered trademarks and/or service marks of PCI-SIG. All other trademarks or registered trademarks are the property of their respective owners. When referring to drive capacity, one gigabyte, or GB, equals one billion bytes and one terabyte, or TB, equals one trillion bytes. Your computer's operating system may use a different standard of measurement and report a lower capacity. In addition, some of the listed capacity is used for formatting and other functions, and thus will not be available for data storage. Actual data rates may vary depending on operating environment and other factors, such as chosen interface and drive capacity. Seagate reserves the right to change, without notice, product offerings or specifications. DS2085.1-2110GB October 2021