

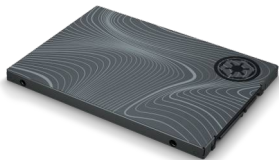


DATA SHEET

Beskar™ Ingot Drive Special Edition FireCuda SATA SSD



Bring style and skill to your solar system with the officially-licensed Beskar™ Ingot Drive. This Special Edition FireCuda SATA SSD comes forged with a beskar ingot design, perfect for true collectors who want to bring speed and capacity to their battlestation. Plus, with a slim form factor, *Star Wars* themed builds have multiple easy install options at their disposal.



Key Features:

This SATA SSD is inspired by the Mandalorian's beskar ingot.

Forged with a beskar ingot design, this collectible's theme is inspired by *The Mandalorian™*, down to its Imperial stamp.

Slim 2.5 inch SATA form factor allows for versatile installation options for new PC builds or upgrades.

A bold design that's perfect for your Star Wars themed PC build.

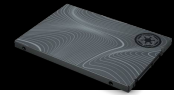
Take advantage of high sequential read/write speeds up to 560/540 MB/s for more responsive downloads, installs and multitasking.

Bring long lasting endurance with 0.3 DWPD, 1.8M MTBF, and up to 1,170 TBW

Enjoy peace of mind with our industry leading 5-year warranty and 3-year Rescue Data Recovery Services.

Add new drives to your computer and monitor their health and performance with free DiscWizard™ and SeaTools™ software.

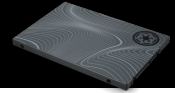




Specifications	2TB	1TB
Standard Model	ZA2000GM10011	ZA1000GM10011
Interface	SATA 6 Gb/s	SATA 6 Gb/s
NAND Flash Memory	3D TLC	3D TLC
Form Factor	2.5 in × 7mm	2.5 in × 7 mm
Performance		
Sequential Read (Max, MB/s), 128KB ¹	560	560
Sequential Write (Max, MB/s), 128KB ¹	540	540
Random Read (Max, IOPS), 4 KB QD32 ¹	90,000	90,000
Random Write (Max, IOPS), 4 KB QD32 ¹	90,000	90,000
Endurance/Reliability		
Total Bytes Written (TB)	1,170	600
Mean Time Between Failures (MTBF, hours)	1,800,000	1,800,000
Rescue Data Recovery Services (years) ²	3	3
Warranty, Limited (years)	5	5
Power Management		
Active Power, Average (W)	2.8	2.7
Idle Power, Average (W)	0.128	0.12
DevSleep (mW)	5	5
Environmental		
Temperature, Operating Internal (°C)	0°C – 70°C	0°C – 70°C
Temperature, Non-operating (°C)	-40°C – 85°C	-40°C – 85°C
Shock, Non-operating: 0.5 ms (Gs)	1,500	1,500
Physical		
Height (mm/in, max)	7.1 mm/0.249 in	7.1 mm/0.249 in
Width (mm/in, max)	70.1 mm/2.759 in	70.1 mm/2.759 in
Depth (mm/in, max)	100.35 mm/3.95 in	100.35 mm/3.95 in
Weight (lb/g)	50 g/0.11 lb	50 g/0.11 lb
Special Features		
TRIM	Yes	Yes
S.M.A.R.T.	Yes	Yes
Halogen-free	Yes	Yes
RoHS compliance	Yes	Yes

¹ Fresh out of box (FOB) performance obtained on newly formatted drive. Performance may vary based on SSD's firmware version, system hardware, and configuration. Performance based on CrystalDiskMark v.6.0.0 x64 on Windows 10 host.

² Rescue Data Recovery Services not available in all countries.



Specifications			
Retail Packaging	Box Dimensions	Master Carton Dimensions	Pallet Dimensions
Length (in/mm)	6.181 in/157 mm	10.709 in/272 mm	47.992 in/1,219 mm
Width (in/mm)	6.102 in/155 mm	7.48 in/190 mm	40 in/1,016 mm
Depth (in/mm)	0.906 in/23 mm	9.134 in/232 mm	41.22 in/1,047 mm
Weight (lb/kg)	0.397 lb/0.18 kg	5.049 lb/2.29 kg	434.311 lb/197 kg
Quantities			
Boxes per Master Carton	10		
Master Cartons per Pallet	80		
Pallet Layers	4		

System Requirements	What's Included
---------------------	-----------------

- SATA 6 Gb/s or SATA 3 Gb/s port
- Windows[®] 10 , Windows[®] 11
- Linux
- Beskar™ Ingot Drive Special Edition FireCuda[®] SATA SSD

Region	Model Number	Capacity	Limited Warranty (years)	UPC Code	EAN Code	Multi-Pack UPC
WW	ZA1000GM1A011	1TB	5	763649171189	8719706428200	10763649171186
WW	ZA2000GM1A011	2TB	5	763649172704	8719706429702	10763649172701

[seagate.com](https://www.seagate.com)



© 2021 Seagate Technology LLC. All rights reserved. Seagate, Seagate Technology, and the Spiral logo are registered trademarks of Seagate Technology LLC in the United States and/or other countries. FireCuda and the FireCuda logo are either trademarks or registered trademarks of Seagate Technology LLC or one of its affiliated companies in the United States and/or other countries. The PCIe word mark and/or PCIeExpress design mark are registered trademarks and/or service marks of PCI-SIG. All other trademarks or registered trademarks are the property of their respective owners. When referring to drive capacity, one gigabyte, or GB, equals one billion bytes and one terabyte, or TB, equals one trillion bytes. Your computer's operating system may use a different standard of measurement and report a lower capacity. In addition, some of the listed capacity is used for formatting and other functions, and thus will not be available for data storage. Actual data rates may vary depending on operating environment and other factors, such as chosen interface and drive capacity. Seagate reserves the right to change, without notice, product offerings or specifications. DS2087.2-2111GB November 2021